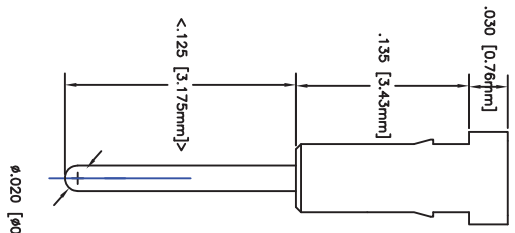


MATERIAL SPECIFICATIONS:
 MATERIAL: BRASS ALLOY 360 1/2 HARD PER QQ-B-438
 FINISH: POLISHED
 ELECTRICAL PERFORMANCE TESTS: MIL-STD-202 OR 1344 METHODS:
 MAX VOLTAGE: 90 VAC/70 VDC
 MAX CURRENT: 0.1 AMP/0.1 AMP/500C
 INSULATION RESISTANCE: @500 VDC: 5000 MEGOHMS MIN.
 SURFACE RESISTANCE: 50M MAX

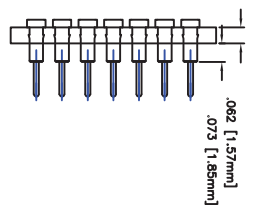
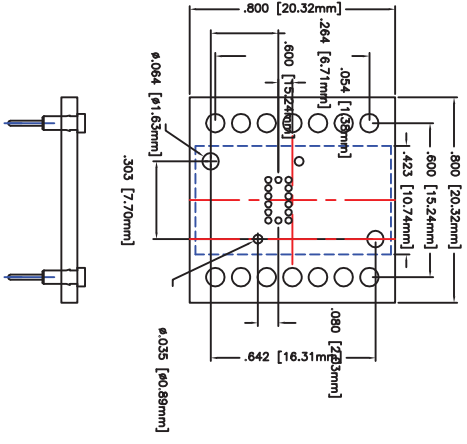
MATERIAL SPECIFICATIONS:
 STANDARD MATERIAL:
 GLASS EPOXY FR-4, POC-4101/24,
 94V-0, COMBINATION USE, T288, 190C,
 HEAT DEFLECTION TEMP @264 PSJ/175C



BILL OF MATERIALS

PART NUMBER	QTY.
1. 14LGA-6	1
2. 4142	14
3.	
4.	

TOP VIEW



REVISIONS		DESCRIPTION	DATE	APPROVED
---	1	Released	03/10/09	

THIS DRAWING CONTAINS PROPRIETARY INFORMATION AND IS PROPERTY OF ADAPTERS-PLUS INC. IT IS TO BE USED FOR MANUFACTURE OR SALE OF ADAPTERS-PLUS PRODUCTS ONLY. REPRODUCTION, TRANSMISSION OR OTHER USE WITHOUT THE WRITTEN CONSENT FROM ADAPTERS-PLUS INC.



ADAPTERS-PLUS
 WWW.ADAPT-PLUS.COM, PH 209-839-0200

14 LGA SMT FOOTPRINT TO
 .6 WIDE 14 PIN DIP, 1-1

DRAWN BY: ANDREW MONTROYA	SIZE: FSCM NO.	DWG NO. CA-LGA14SM-6DIP	REV 1
CHECKED: MIKE OIDEM	SCALE: 2:1	DATE: 04/10/09	SHEET