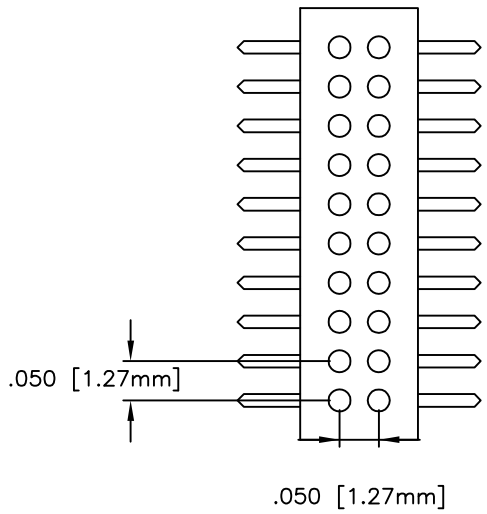
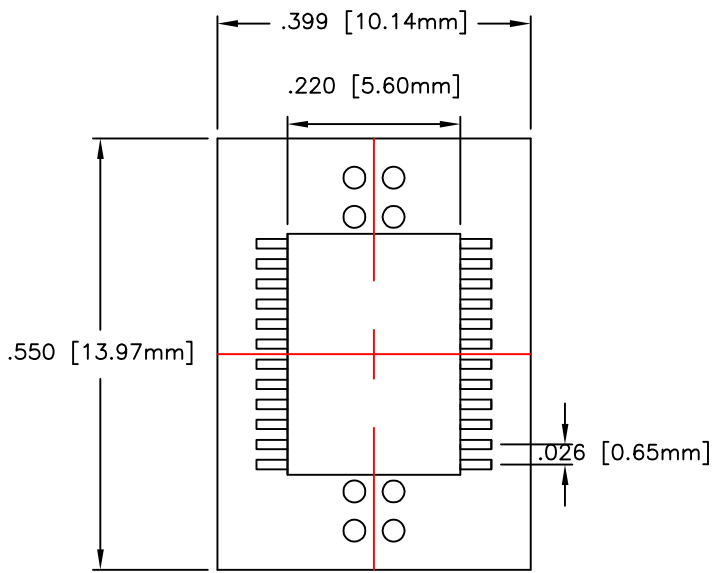
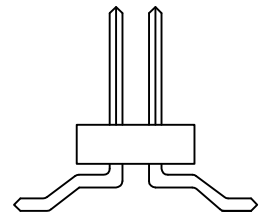
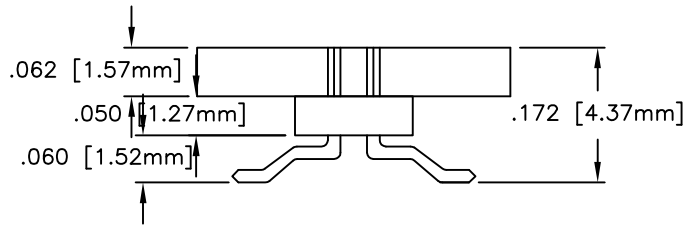



REVISIONS				
ZONE	REV	DESCRIPTION	DATE	APPROVED
---	A	NEW RELEASE	07/07/10	



CONNECTION TABLE		
SSOP 24	NAME	SOIC
1	VSS	1
2	VSS	1
3	IN-B	2
4	ABBL	3
5	VDD	4
6	IN-C	5
7	CLP	6
8	VDD	7
9	OUT-C	8
10	VGG	9
11	OUT-B	10
12	NC	-
13	NC	-
14	OUT-A	11
15	CDS	12
16	VSS	13
17	VSS	14
18	XDL2	15
19	XDL1	16
20	VDD	17
21	ABCN	18
22	ABOVF	19
23	IN-A	20
24	NC	-



CONTRACT NO.		 Adapters-Plus ☎ 209-839-0200 P.O. BOX 900; TRACY, CA 95378 WWW.ADAPT-PLUS.COM		
APPROVALS:		24 PIN SSOP TO 20 PIN SOIC FOR 400 WIDE BODY .050 PITCH		
DRAWN BY: ANDREW MONTOYA				
CHECKED: MIKE OIDEM	SIZE A	FSCM NO.	DWG NO. CA024SSOP-20SOP-SONY	REV A
ISSUED: ANDREW MONTOYA	SCALE: 1:1	DATE : 07/07/10	SHEET: 1 OF 1	