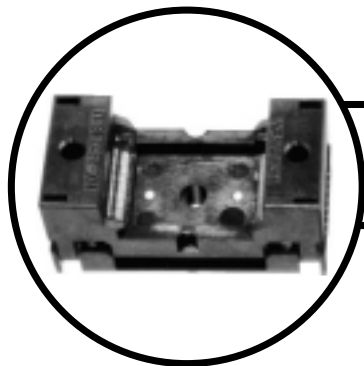


# TSOP OPEN TOP ZIF



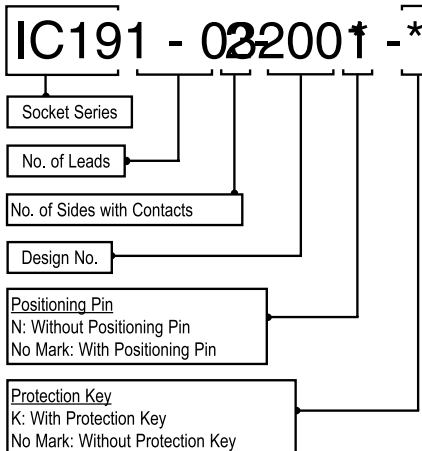
## IC191 Series

### Characteristics

Insulation Resistance:	1,000M $\frac{1}{2}$ minimum at 500 VDC
Withstanding Voltage:	700 VAC for 1 Minute
Contact Resistance:	30m $\frac{1}{2}$ max. at 10mA/20mV (Initial)
Operating Temperature:	-40 $\mu$ C ~ +170 $\mu$ C

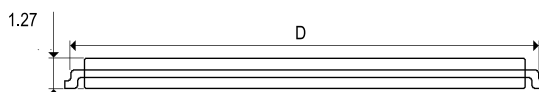
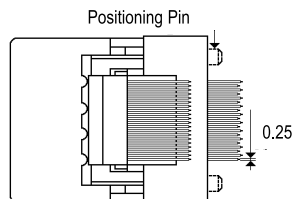
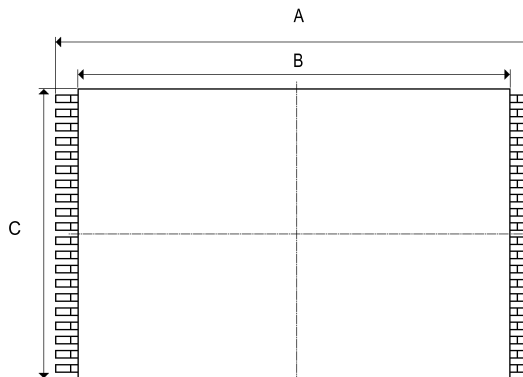
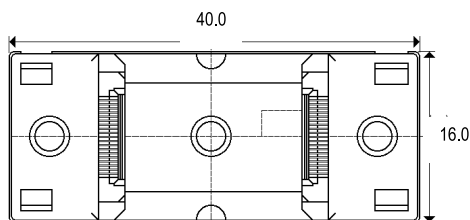
### Material

Insulator:	PEI (Glass Filled) UL94V-0
Contact:	Beryllium Copper
Plating:	Gold over Nickel



### Contact Force

20g min. per pin at min. displacement of 0.3mm  
80g min. per pin at min. displacement of 0.7mm



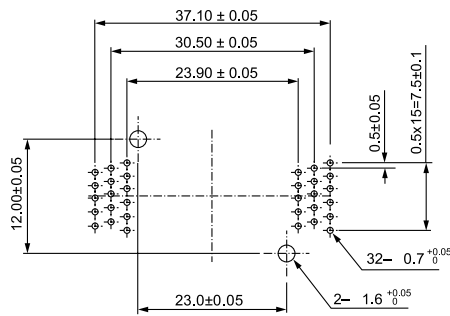
Part Number	No. of Leads	Pitch	A	B	C	D
IC191-0322-001	32	0.50	19.8 ~ 20.2	18.3 ~ 18.5	8.2 Max	19.0
IC191-0402-002	40	0.50	19.8 ~ 20.2	18.3 ~ 18.5	10.2 Max	19.0
IC191-0482-004	48	0.50	19.9 ~ 20.1	18.35 ~ 18.45	12.3 Max	19.0

To Order, please call 209.839.0200 or Fax order to 209.839.0235  
www.adapt-plus.com Email: sales@adapt-plus.com

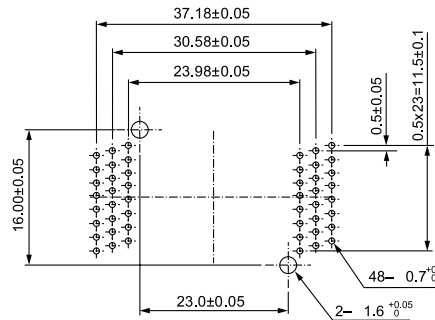
# PC BOARD LAYOUTS

## IC191 Series

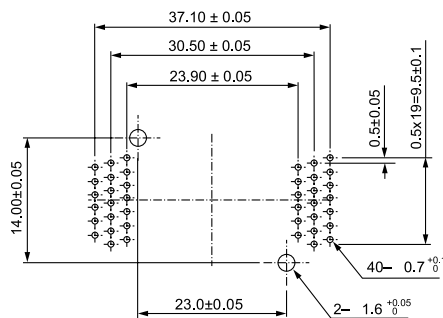
TSOP IC191-0322-001 (32 Pins)



TSOP IC191-0482-004 (48 Pins)



TSOP IC191-0402-002 (40 Pins)



To Order, please call 209.839.0200 or Fax order to 209.839.0235  
www.adapt-plus.com Email: sales@adapt-plus.com