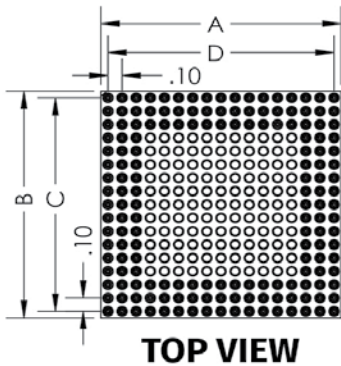


## Custom PGA sockets & header adapters

for precise PCB connections. Ideal for production & prototyping.

Custom PGA sockets & header adapters for precise PCB connections. Ideal for production & prototyping.

Discover our extensive range of build-to-order PGA sockets and header adapters designed to meet your exact specifications. Our products are meticulously engineered to provide flawless connections on printed circuit boards (PCB's). Whether you require solutions for production or prototype applications, we have



GRID	A	B	C	D
8X8	0.80"	0.80"	0.70"	0.70"
9X9	0.90"	0.90"	0.80"	0.80"
10X10	1.00"	1.00"	0.90"	0.90"
11X11	1.10"	1.10"	1.00"	1.00"
12X12	1.20"	1.20"	1.10"	1.10"
13X13	1.30"	1.30"	1.20"	1.20"
14X14	1.40"	1.40"	1.30"	1.30"
15X15	1.50"	1.50"	1.40"	1.40"
16X16	1.60"	1.60"	1.50"	1.50"
17X17	1.70"	1.70"	1.60"	1.60"
18X18	1.80"	1.80"	1.70"	1.70"
19X19	1.90"	1.90"	1.80"	1.80"
20X20	2.00"	2.00"	1.90"	1.90"
21X21	2.10"	2.10"	2.00"	2.00"
22X22	2.20"	2.20"	2.10"	2.10"
23X23	2.30"	2.30"	2.20"	2.20"
24X24	2.40"	2.40"	2.30"	2.30"
25X25	2.50"	2.50"	2.40"	2.40"

### Features

- Max Cooling
- Stackable
- End to End
- Side to Side
- Precision Pin-Outer Shell
- Easy Insertion & Extraction
- Custom Plating Options available

### Electrical

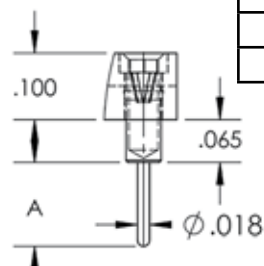
- Max Voltage: 75 VAC / 100 VDC
- Contact Resistance: >10 milliohms per contact
- Contact Capacitance: 0.3 pF
- Contact Current Rating: 3 Amps
- Insulation Resistance @ 500V DC: 1000 mega ohms
- Contact Operating Temp: -55°C TO 150°C (BeCu)
- Dielectric withstanding voltage: 100 VAC
- Durability: 1k Cycles

### Materials

- Shell: Brass
- Contact: BeCu
- Shell Plating: Au Over Ni (Standard)
- Contact Plating: Au Over Ni (Standard)

### SOCKET TERMINALS

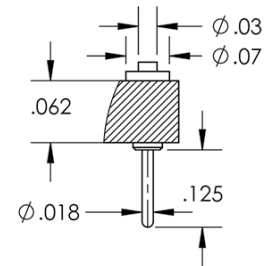
013(X)



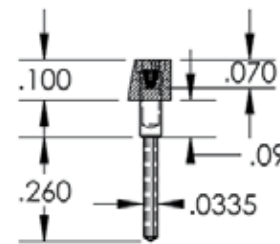
Length Code	Dim A
.125	1
.180	2
.215	3

### ADAPTER TERMINALS

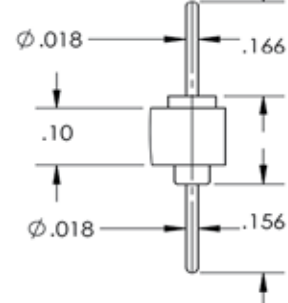
004(X)



030(X)

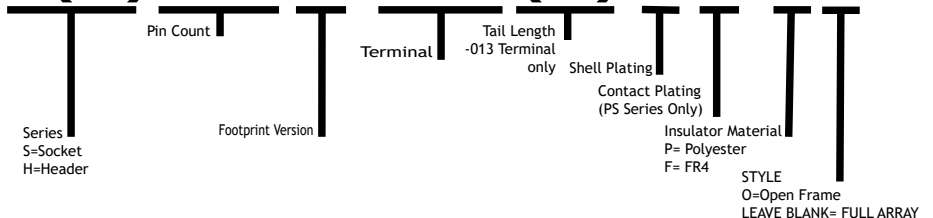


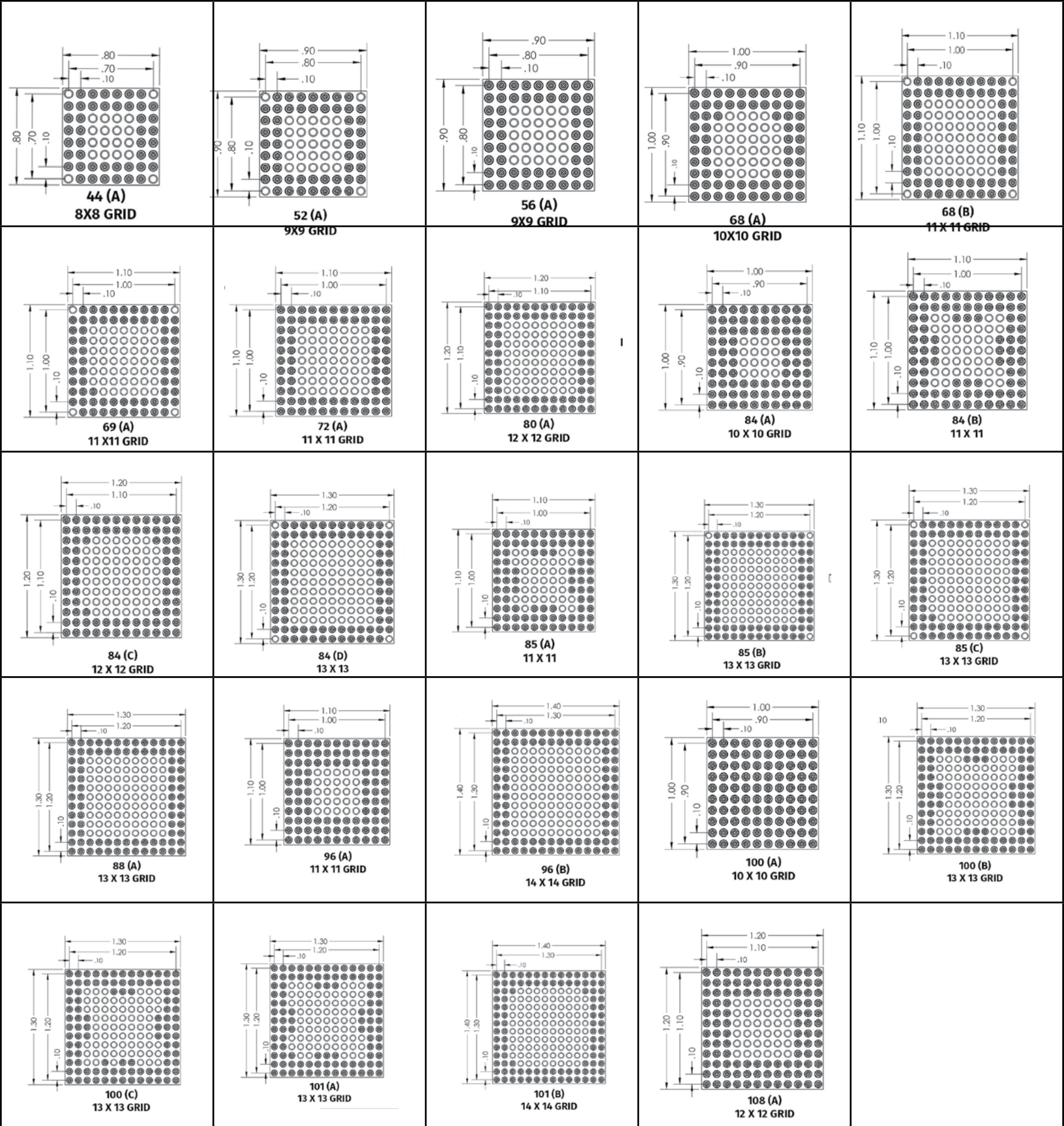
008(X)



## How To Order:

**P(X)108A-013(X)GG-XX**





## PGA FOOTPRINTS



P:209 839 0200  
F:209 839 0235

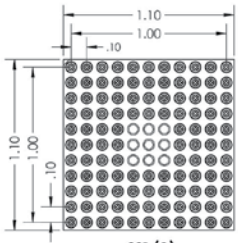


PO BOX 900  
Tracy, CA 95378

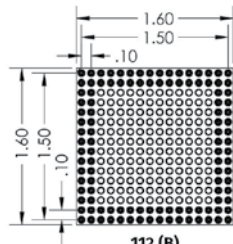


[www.adapt-plus.com](http://www.adapt-plus.com)  
[sales@adapt-plus.com](mailto:sales@adapt-plus.com)

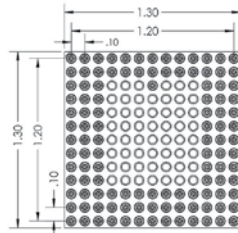




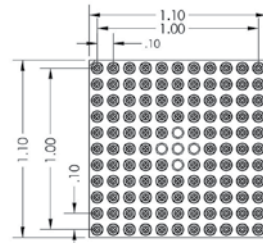
**112 (A)**  
11 X 11 GRID



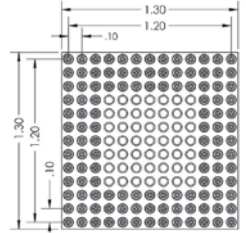
**112 (B)**  
16 X 16 GRID



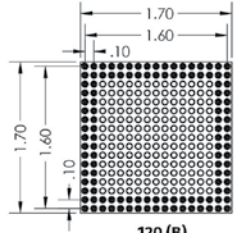
**114 (A)**  
13 X 13 GRID



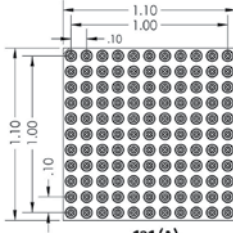
**116 (A)**  
11 X 11 GRID



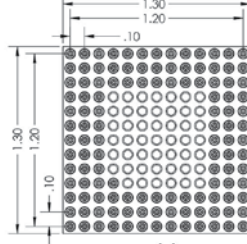
**120 (A)**  
13 X 13 GRID



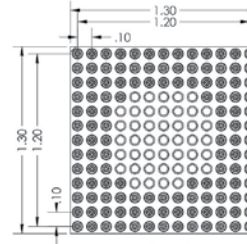
**120 (B)**  
17 X 17 GRID



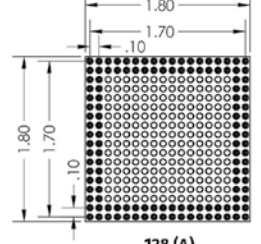
**121 (A)**  
11 X 11 GRID



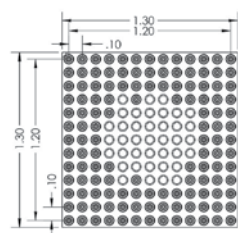
**121 (B)**  
13 X 13 GRID



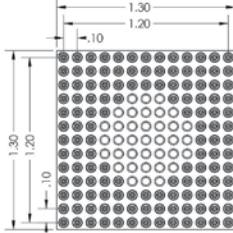
**125 (A)**  
13 X 13 GRID



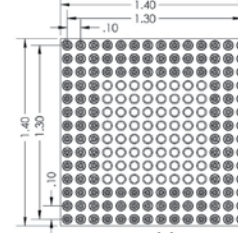
**128 (A)**  
18 X 18 GRID



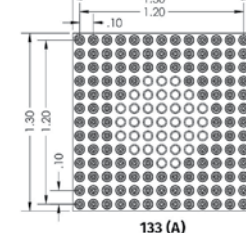
**130 (A)**  
13 X 13 GRID



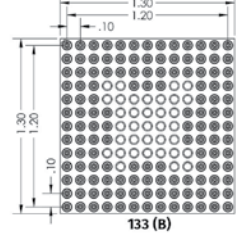
**132 (A)**  
13 X 13 GRID



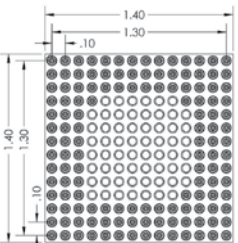
**132 (B)**  
14 X 14 GRID



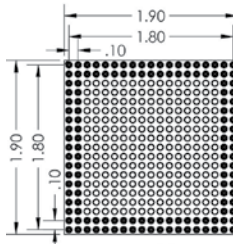
**133 (A)**  
13 X 13 GRID



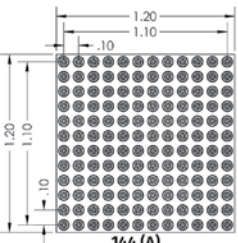
**133 (B)**  
13 X 13 GRID



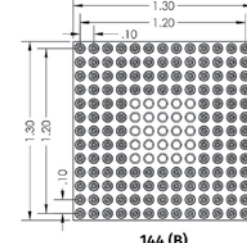
**135 (A)**  
14 X 14 GRID



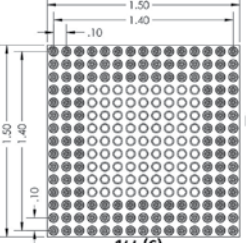
**136 (A)**  
19 X 19 GRID



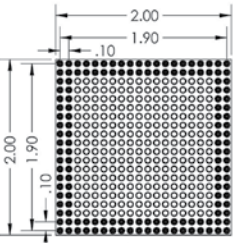
**144 (A)**  
12 X 12 GRID



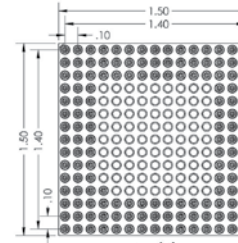
**144 (B)**  
13 X 13 GRID



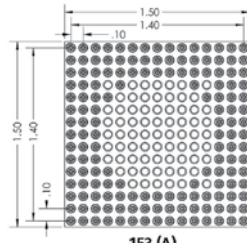
**144 (C)**  
15 X 15 GRID



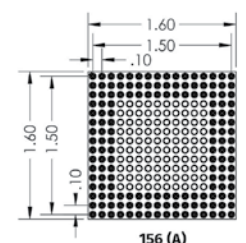
**144 (D)**  
20 X 20 GRID



**145 (A)**  
15 X 15 GRID



**153 (A)**  
15 X 15 GRID



**156 (A)**  
16 X 16 GRID

## PGA FOOTPRINTS



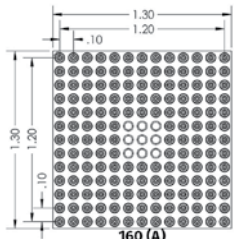
P:209 839 0200  
F:209 839 0235



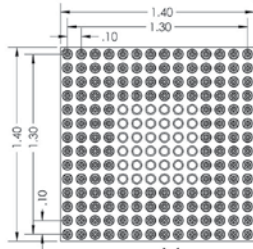
PO BOX 900  
Tracy, CA 95378



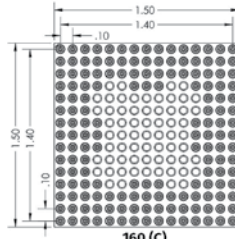
www.adapt-plus.com  
sales@adapt-plus.com



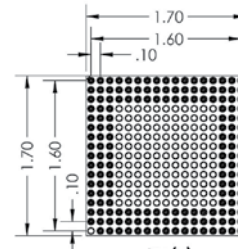
160 (A)  
13 X 13 GRID



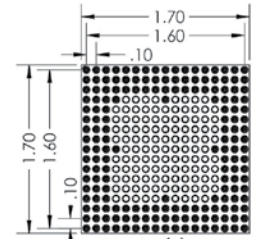
160 (B)  
14 X 14 GRID



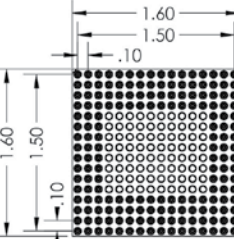
160 (C)  
15 X 15 GRID



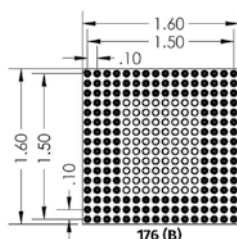
167 (A)  
17 X 17 GRID



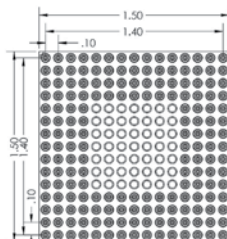
175 (A)  
17 X 17 GRID



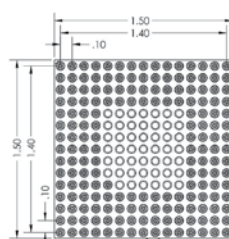
176 (A)  
16 X 16 GRID



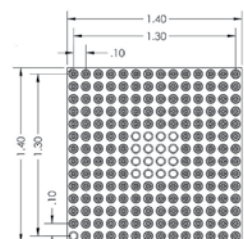
176 (B)  
16 X 16 GRID



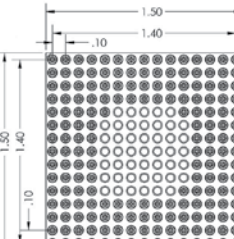
176 (C)  
15 X 15 GRID



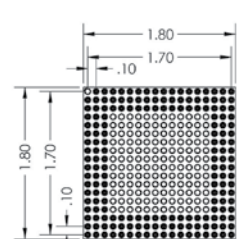
177 (A)  
15 X 15 GRID



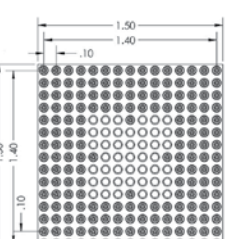
179 (A)  
14 X 14 GRID



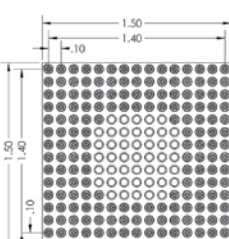
179 (B)  
15 X 15 GRID



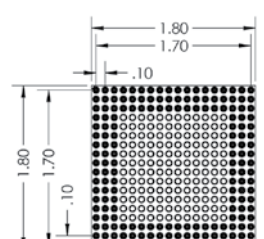
179 (C)  
18 X 18 GRID



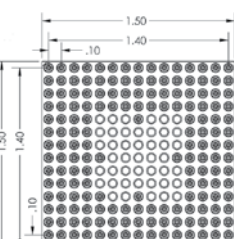
180 (A)  
15 X 15 GRID



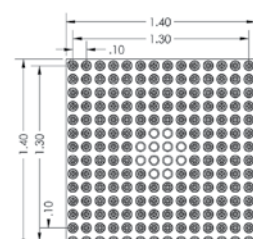
180 (B)  
15 X 15 GRID



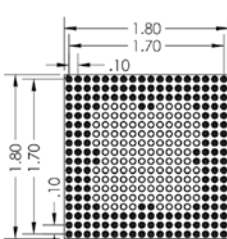
180 (C)  
18 X 18 GRID



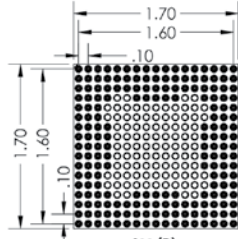
181 (A)  
15 X 15



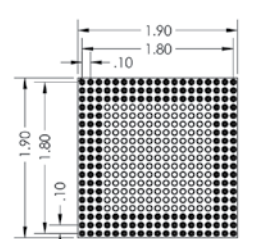
184 (A)  
14 X 14 GRID



192 (A)  
18 X 18 GRID



192 (B)  
17 X 17 GRID



192 (C)  
19 X 19 GRID

## PGA FOOTPRINTS



P:209 839 0200  
F:209 839 0235

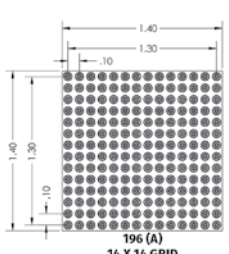


PO BOX 900  
Tracy, CA 95378

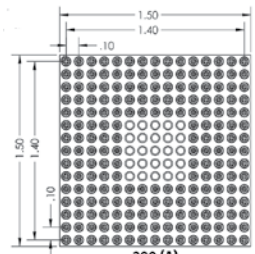


www.adapt-plus.com  
sales@adapt-plus.com

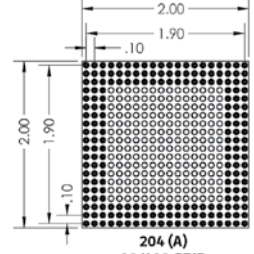




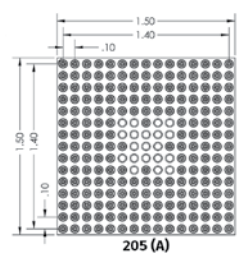
196 (A)  
14 X 14 GRID



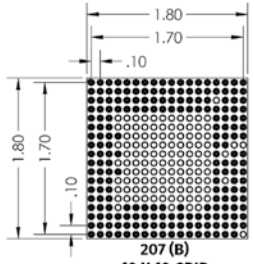
200 (A)  
15 X 15 GRID



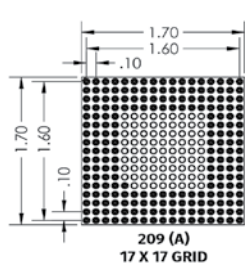
204 (A)  
20 X 20 GRID



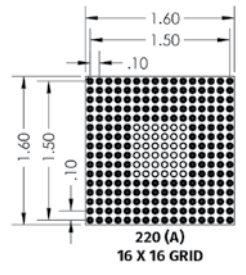
205 (A)  
15 X 15 GRID



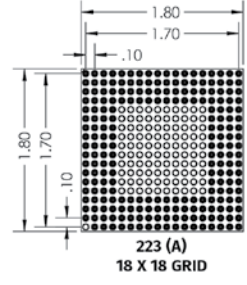
207 (B)  
18 X 18 GRID



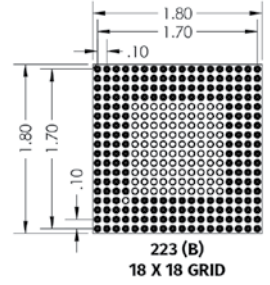
209 (A)  
17 X 17 GRID



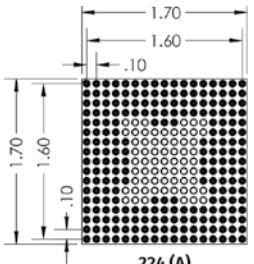
220 (A)  
16 X 16 GRID



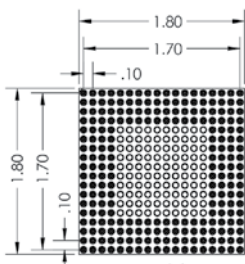
223 (A)  
18 X 18 GRID



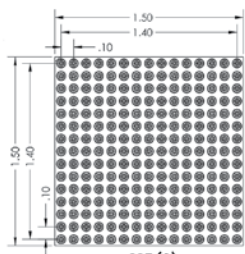
223 (B)  
18 X 18 GRID



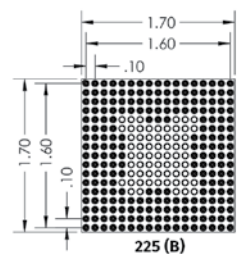
224 (A)  
17 X 17 GRID



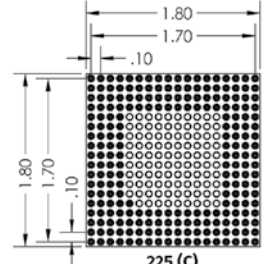
224 (B)  
18 X 18 GRID



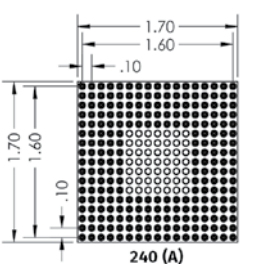
225 (A)  
15 X 15 GRID



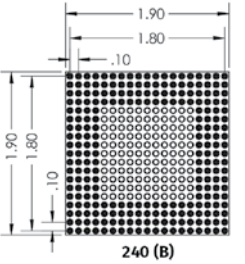
225 (B)  
17 X 17 GRID



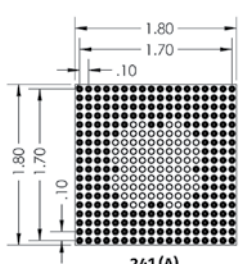
225 (C)  
18 X 18 GRID



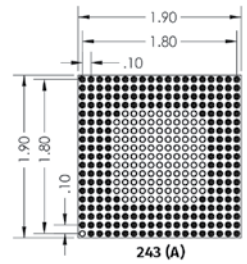
240 (A)  
17 X 17 GRID



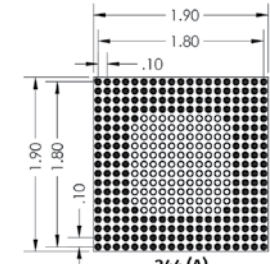
240 (B)  
19 X 19 GRID



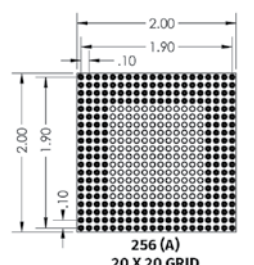
241 (A)  
18 X 18 GRID



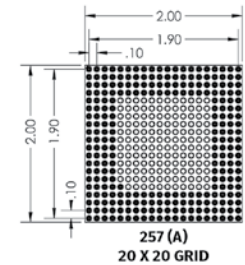
243 (A)  
19 X 19 GRID



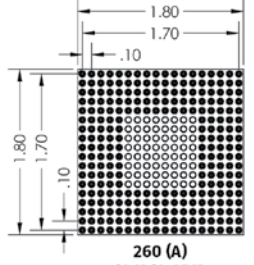
244 (A)  
19 X 19 GRID



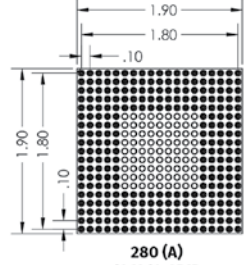
256 (A)  
20 X 20 GRID



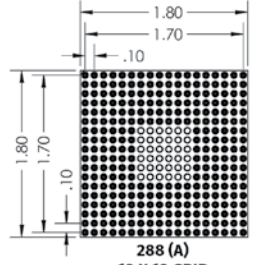
257 (A)  
20 X 20 GRID



260 (A)  
18 X 18 GRID



280 (A)  
19 X 19 GRID



288 (A)  
18 X 18 GRID

## PGA FOOTPRINTS



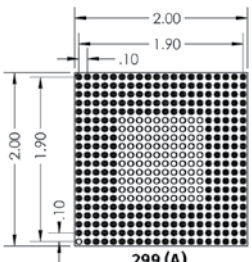
P:209 839 0200  
F:209 839 0235



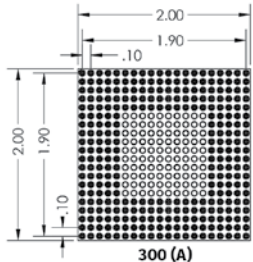
PO BOX 900  
Tracy, CA 95378



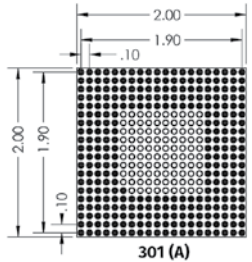
www.adapt-plus.com  
sales@adapt-plus.com



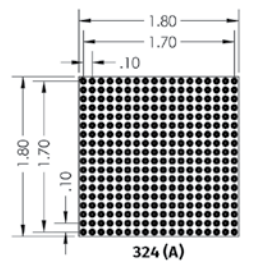
**299 (A)**  
20 X 20 GRID



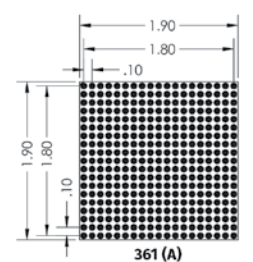
**300 (A)**  
20 X 20 GRID



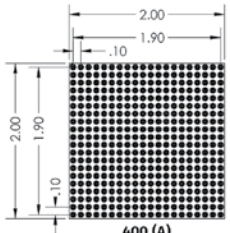
**301 (A)**  
20 X 20 GRID



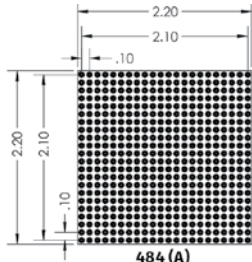
**324 (A)**  
18 X 18 GRID



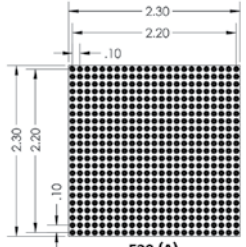
**361 (A)**  
19 X 19 GRID



**400 (A)**  
20 X 20 GRID



**484 (A)**  
22 X 22 GRID



**529 (A)**  
23 X 23 GRID

## PGA FOOTPRINTS



P:209 839 0200  
F:209 839 0235



PO BOX 900  
Tracy, CA 95378



[www.adapt-plus.com](http://www.adapt-plus.com)  
[sales@adapt-plus.com](mailto:sales@adapt-plus.com)